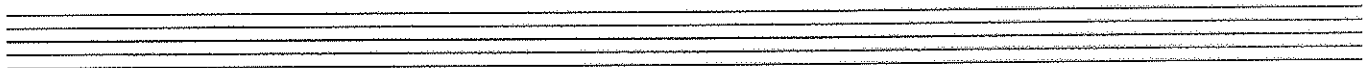


1(a) Fix in bass clef and write a major scale with 4 flats without a key signature in ascending order. Use semibreves to represent your notes and mark areas of semitones.



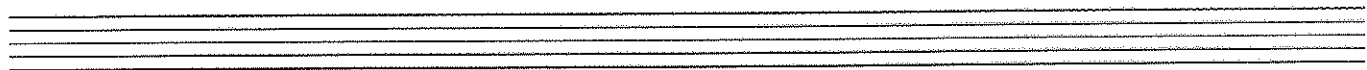
[10]

(b) Using treble clef, construct a major scale of (5) five sharps in ascending order with accidentals and mark areas of semitones.



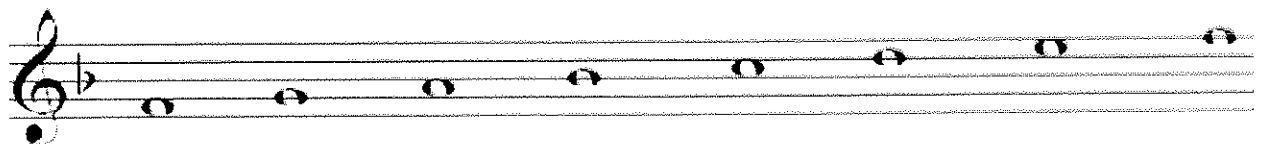
[10]

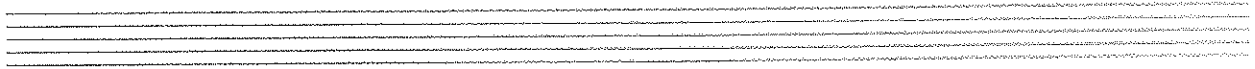
(c) Compose a six bar rhythm in simple triple time. Include a crotchet rest in your rhythm. Use "G" clef.



[10]

(b).Transpose the scale below an octave lower in the treble clef but this time do not use key signature. Use the provided staff below.

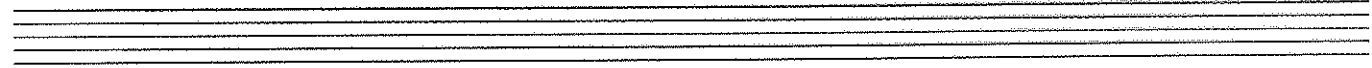
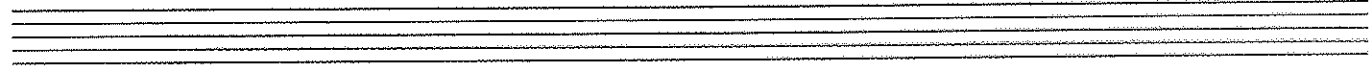
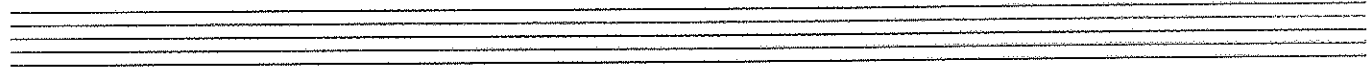




[10 marks]

(c).Compose a melody of not more than 6 bars. Choose instrument, soprano-
(voice), recorder, trumpet or clarinet. Include any necessary tempo markings
and dynamics.

Instrument _____



[15]

(c). Write in the stated clef sign and show melodic intervals given below. The
lower note that you are going to indicate is the key note. Do not use key
signature.

a) Diminished 5th in E major

b) major 6th in A major

c). compound minor 3rd in C major

d). major 9 th

e). perfect 4th in D major

[10]

(d). Add a key signature in each tonic triad, in the treble clef sign:

a). root position in B major

b). root position in A minor

c). 1ST inversion in D flat major

d) 2nd inversion in C major Sub-dominant

e). 2nd inversion in C minor Sub-dominant

[10]

(e). Which cadence comprises the following chord progressions:

i) tonic to dominant (1)

ii) Subdominant to tonic..... (1)

iii) Dominant to tonic (1)

iv) Dominant to submediant..... (1)

v) Explain what is a chord and give particular example

.....
.....
.....
.....(2)

(f). What are the enharmonic of the following notes?

i) E sharp..... (1)

ii) B double flat..... (1)

(g). what letter names are represented by the following technical names;

i) Leading note of C melodic minor in ascending order.....(1)

ii) Subdominant of F major.....(1)

[10]

(h). Write 2 orchestra music instruments under each given category in their order starting with the highest to lowest.

i) Percussion.....

ii). String

iii) Brass

iv) Woodwind.....

v). Bassoon [10]

(j). Give meanings of the following words:

i) piano

iv) Forte.....

v) Allegro.....

vi) Dolce

vii) Presto.....

[10]

END OF PAPER